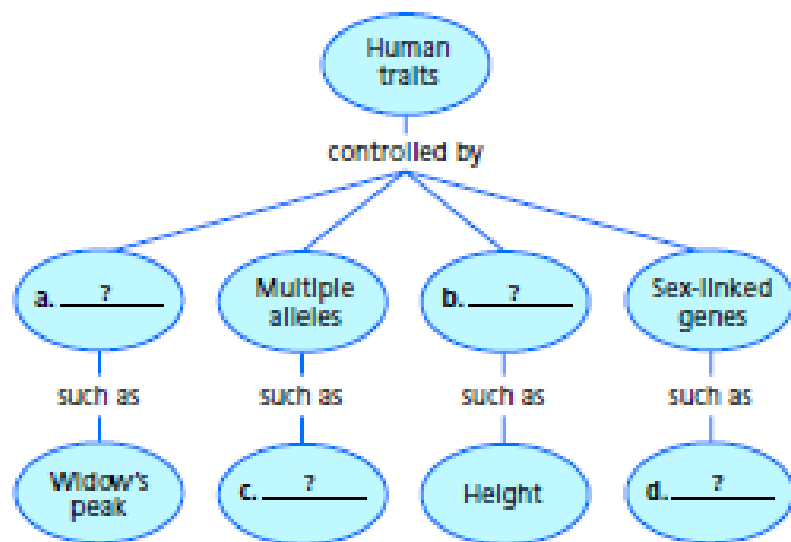


Review and Assessment

Organizing Information

Concept Mapping Copy the concept map about human traits onto a separate sheet of paper. Then complete it and add a title. (For more on Concept Mapping, see the Skills Handbook.)



Reviewing Key Terms

Choose the letter of the best answer.

- A human trait that is controlled by a single gene with multiple alleles is
 - dimples.
 - blood type.
 - height.
 - skin color.
- A sex-linked disorder is
 - cystic fibrosis.
 - sickle-cell disease.
 - hemophilia.
 - Down syndrome.
- Which of the following would most likely be used to diagnose Down syndrome?
 - a karyotype
 - a pedigree
 - a blood-clotting test
 - a Punnett square
- Inserting a human gene into a bacterial plasmid is an example of
 - inbreeding.
 - selective breeding.
 - DNA fingerprinting.
 - genetic engineering.
- An organism that has the same genes as the organism from which it was produced is called a
 - clone.
 - hybrid.
 - genome.
 - pedigree.

If the statement is true, write **true**. If it is false, change the underlined word or words to make the statement true.

- A widow's peak is a human trait that is controlled by a single gene.
- A male inherits two X chromosomes.
- A karyotype tracks which members of a family have a trait.
- Hybridization is the crossing of two genetically similar organisms.
- A genome is all the DNA in one cell of an organism.

Writing in Science

Fact Sheet You are a scientist in a cloning lab. Write a fact sheet that explains what the process of cloning involves. Describe at least one example.