

# Building Blocks of Life

Match each part of a cell to the function it performs.

15

cell membrane

nuclear membrane

cytoplasm

nucleus

endoplasmic reticulum

golgi body

mitochondria

chloroplasts

lysosomes

chromatin

ribosomes

directs a cell's activities

the outer covering of a cell

large structure that contains chlorophyll in plants

creates energy and performs respiration

contains RNA and binds RNA together to synthesize proteins

a membrane network that makes, changes, and transports cellular materials mostly for use inside the cell

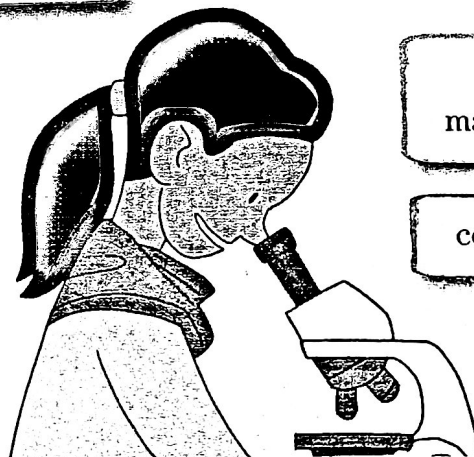
the covering of the nucleus

packages, strengthens, and protects DNA, and controls gene expression

the fluid inside a cell

makes, stores, and transports materials mostly for use outside the cell

contains enzymes that digest particles



Label these elements of the cell on the diagram below.

cell membrane  
nucleus  
endoplasmic reticulum  
cytoplasm  
nuclear membrane

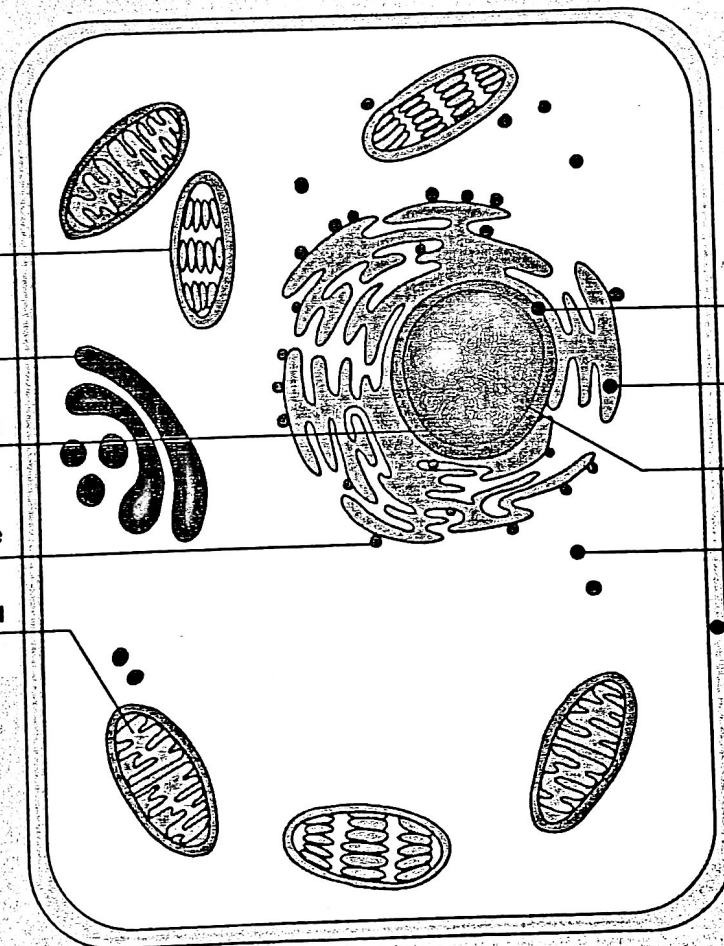
chloroplasts

golgi body

chromatin

ribosome

mitochondria



Bonus: Do you think this a plant or an animal cell? Why?